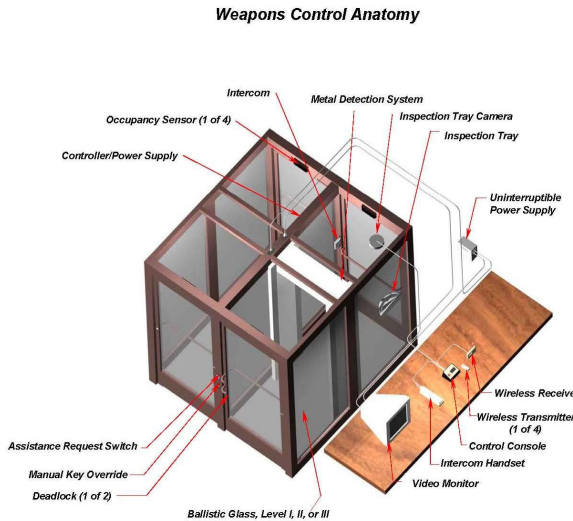


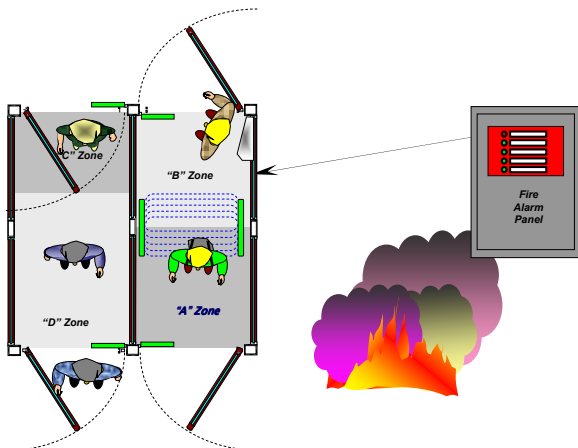
Introduction

The Emergency Release System, standard in all systems, provide the ability to unlock all doors in the Isotec Weapons Control System. All devices used in this system are UL Listed or Recognized.



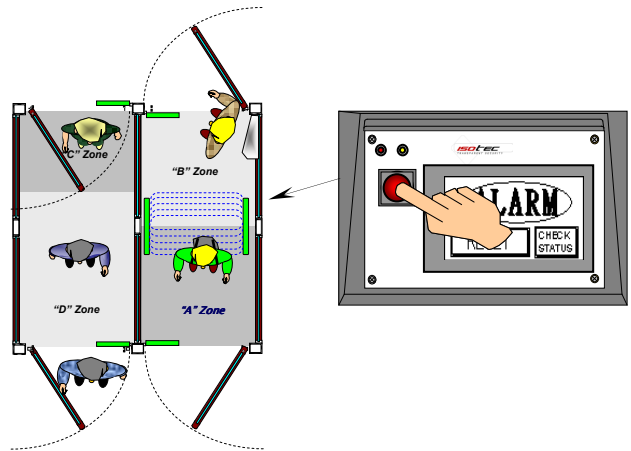
Fire Alarm Release Operation

In case of a fire or activation of a safety monitoring detection system all doors will unlock automatically. This system is connected to the building fire alarm system, earthquake detector and/or an emergency bypass switch. A relay, located in the electronics compartment, is opened when any emergency has been activated, thus removing power from all locks.



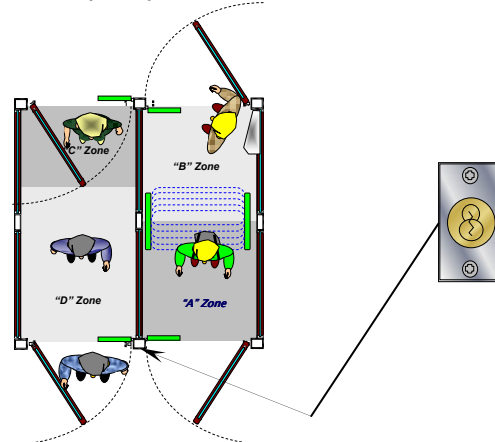
Manual Override Release Operation

Provided with every system is an Emergency Release Push Button. An alternate action push button located on the console releases power to all locks allowing free passage into and out of the building. A light in the switch indicates activation.



Cut Power Key Switch Release

Provided with every system is a Cut Power Key Switch located outside the system. This switch is used to gain entry into the system if the system is locked due to an activation of the metal detector, as an example by the maintenance crew.



Emergency Release Circuit

